



**O'DRILL MCM, INC.**  
Manufacturing Company

**SINCE  
1982**

## **3" Type 'C' 7500 PSI**

*Heavy Duty Reset Relief Valve*



**ISO  
9001:2015  
Certified**

**Pressure Rating  
4000-7500 PSI**

*Available in  
1002 & 1502  
end union  
connections*



*In Stock!*



5055 Cranswick Rd.  
Houston, Texas 77041  
Phone: 713.541.2020  
Fax: 713.541.9090  
Toll Free: 1 800 255.6263

***Engineered to Perform...Built to last!***

***Call: (713) 541-2020***

**MANUFACTURING • SALES • SERVICE**

# 3" Type 'C' 7500 PSI Flanged Body RESET RELIEF VALVE

◆ Available with 1002 & 1502 end union connections ◆

**O'DRILL MCM (Heavy duty) TYPE C flanged 4000-7500 PSI Reset Relief Valve** is designed to be used as a safety valve on slush pumps and mud manifolds, to protect against damaging pressure surges on onshore and offshore rigs. It performs equally good for Hydraulic or Gas.

Good for  
H<sub>2</sub>S  
Service

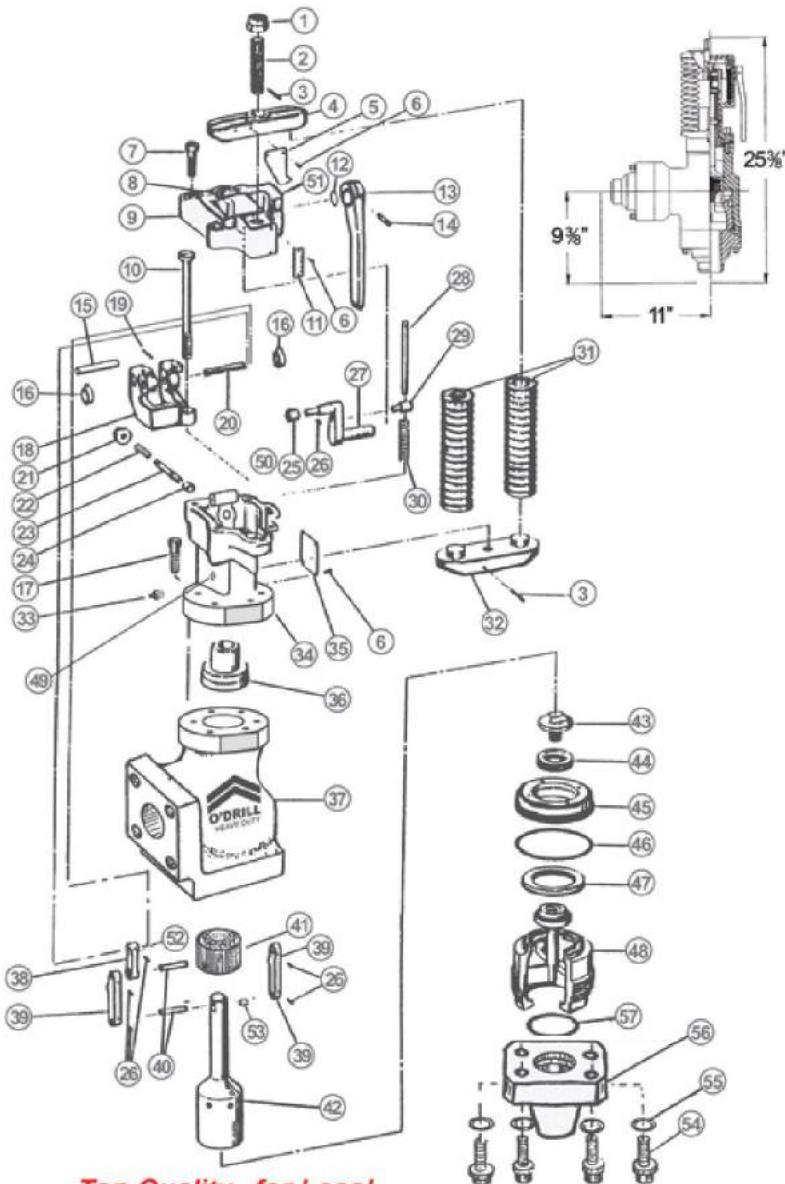


## 3" Type C 7500 psi Complete Valve

Part Number	Flanges
31862-050	None
31862-051	Companion
31862-052	MxF 1502 Union End
31862-055	MxF 1002 Union End

## PARTS LIST

#	QTY.	DESCRIPTION	PART NO.
1	1	Nut, Elastic Stop	5953-34
2	1	Stud, Adjusting	20798
3	2	Pin, Spirol 1/4" x 1 1/2"	20712-04
4	1	Retainer, Upper Spring	30385
5	1	Indicator	30379
6	12	Screw, Self Tap	2975-03
7	4	Screw, Socket-Head Cap	204044-10-00-14
8	1	Plate, Name	75-30170
9	1	Assy. Cover	38159
10	1	Screw, Load	75-30389
11	1	Plate, Calibration	75-21048
12	1	O-Ring	6227-15-01-70
13	1	Handle, Reset	30377
14	1	Pin Spirol 5/16" x 1 3/8"	20712-13
15	1	Pin, Crank Pivot	75-30381
16	2	Spring, Reset	20791
17	6	Screw, Socket head cap screw	204044-10-00-75
18	1	Crank Assy.	75-38161
19	1	Pin Spirol 1/8" x 7/8"	20712-03
20	1	Pin, Top Crank	75-20802
21	1	Button, Release	30396
22	1	Spring Button Release	30390
23	1	Shaft Release	30397
24	1	Bushing, Release Button	30368
25	1	Roller, Reset Crank	75-30388
26	7	Pin Spirol 1/8" x 5/8"	20712-02
27	1	Crank, Reset	75-30373
28	1	Rod, Spring Guide	30387
29	1	Keeper, Spring	30380
30	1	Spring, Reset Crank	30391
31	2	Spring, Load	75-20805-04
32	1	Retainer, Lower Spring	30382
33	1	Fitting, Grease	5929-02
34	1	Sub Assy. Bonnet 6 Bolt	75-38160
35	1	Plate, Instruction	30178
36	1	Bushing, Stem	30828
37	1	Body 6 Bolt	75-31858
38	1	Link, Upper	75-31977
39	2	Link, Lower	75-20786
40	2	Pin, Lower	23545
41	1	Ring, Cushion	31860
42	1	Piston	30829
43	1	Retainer, Inner	30826
44	1	Seal, Inner	30831
45	1	Retainer, Outer	30827
46	1	O-Ring (sub to body)	902640-24-31
47	1	Seal, Outer	30833
48	1	Sub	31861
49	1	Plug, Grease	20750
50	2	Bearing, bonnet	13229-08
51	1	Bearing, cover	13229-12
52	1	Bearing, Upper link	13229-14
53	1	Bearing, Piston	13229-10
54	8	Screws (flange)	111676
55	8	Washer, Lock	111680
56	2	Flange, 4 Bolt	31852
57	2	O-Ring, flange	902640-23-71



**Top Quality...for Less!**

**Note:** O'Drill can rebuild your damaged Type 'B' & 'C' Reset Valves to a brand new condition for a very nominal cost.

**O'Drill/MCM, Inc.**

5055 Cranswick Rd. • Houston, Texas 77041  
Office: (713) 541.2020 / Fax: (713) 541.9090

Website: [www.odrillmcm.com](http://www.odrillmcm.com)  
email: [sales@odrillmcm.com](mailto:sales@odrillmcm.com)