

ISO  
9001:2015  
Certified



*A Pump & Valve Mfg. Company*

*Established  
1982*

*Engineered for High Performance...*

**Catalog  
ORV 2" & 3"**



*The Rig Hands Choice !*



**2"**

**3"**

**OTECO®  
TYPE**

*Top Quality, Lowest Prices..... Guaranteed !!!*



**SHEAR RELIEF VALVES**

100% Interchangeable with CAMERON® & OTECO®





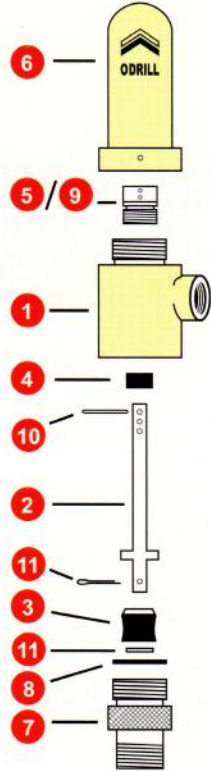
# 2" O'DRILL SHEAR RELIEF VALVES

100% Interchangeable with CAMERON® & OTECO®

## COMPLETE VALVES

2" COMPLETE VALVES		
PRV-20015	2"	125 - 500 PSI
PRV-20210	2"	250 - 1000 PSI
PRV-20513	2"	500 - 1375 PSI
PRV-21027	2"	1000 - 2750 PSI
PRV-21050	2"	1000 - 5000 PSI

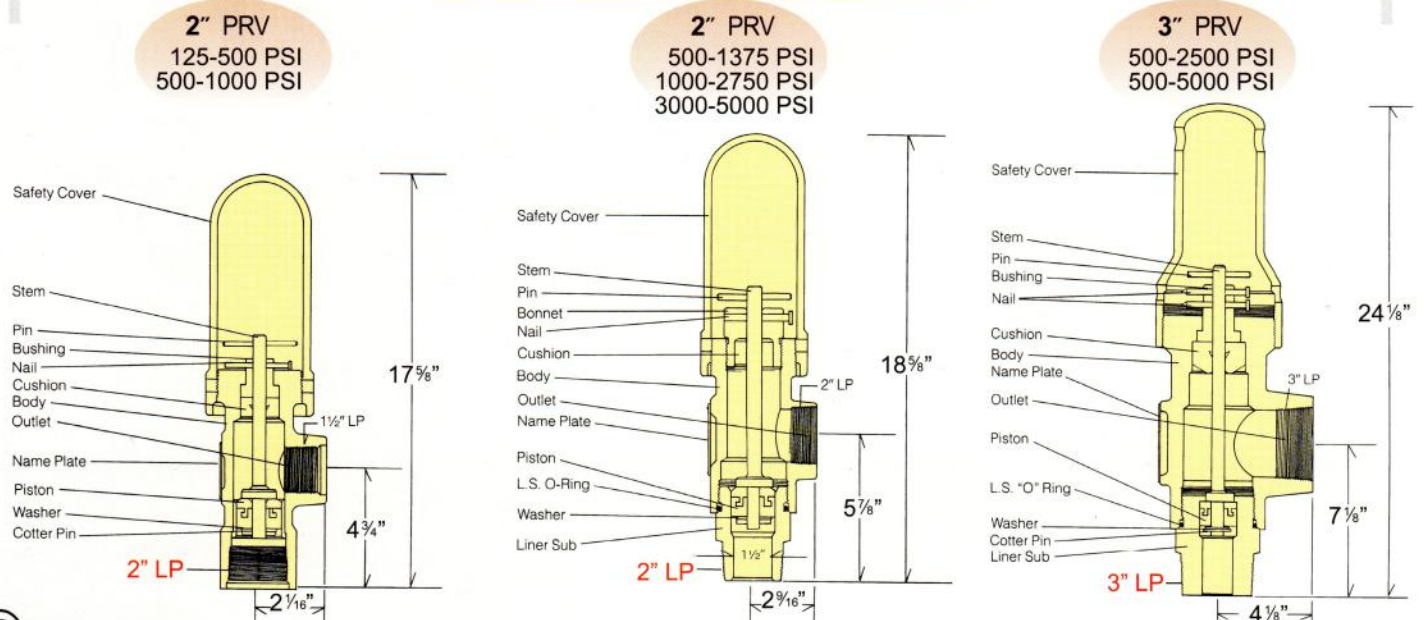
3" COMPLETE VALVES		
PRV-30525	3"	500 - 2750 PSI
PRV-30550	3"	500 - 5000 PSI



2" SHEAR RELIEF VALVE

2" REPLACEMENT PARTS								
DESCRIPTION	2" LOW PRESSURE PRV-20015 125-500 PSI	2" LOW PRESSURE PRV-20210 250-1000 PSI	2" HIGH PRESSURE					
			PRV-20513 500-1375 PSI	PRV-21027 1000-2750 PSI	PRV-21050 1000-5000 PSI			
	Approx. Wt. - Lbs.	Shipping Weight →	26.5 lbs.	26.5 lbs.	26.5 lbs.	26.5 lbs.	29 lbs.	
<b>1</b>	<b>12.4</b>	<b>Body</b>	BV-2110 140121	BV-2110 140121	BV-2550 140125	BV-2550 140125	BV-2550 140125	
<b>2</b>	<b>0.6</b>	<b>Stem</b>	SS-4022 141221	SS-4022 141221	SS-4104 141224	SS-4104 141224	SS-4030 141225	
<b>3</b>	<b>0.4</b>	<b>Piston</b>	SP-4710 141025	SP-4710 141025	SP-4710 141025	SP-4710 141025	SP-4710 141025	
<b>4</b>	<b>0.1</b>	<b>Cushion</b>	SC-4022 140322	SC-4022 140322	SC-4110 140325	SC-4110 140325	SC-4110 140325	
<b>5</b>	<b>0.5</b>	<b>Bushing</b>	BU-2150 141421	BU-2210 141422				
<b>6</b>	<b>9.3</b>	<b>Safety Cover</b>	STC-2125 141125	STC-2125 141125	STC-2125 141125	STC-2125 141125	STC-2125 141125	
<b>7</b>	<b>3.7</b>	<b>Liner Sub</b>			LS-255 140425	LS-255 140425	LS-255 140425	
<b>8</b>	<b>0.1</b>	<b>Liner Sub O-Ring</b>			RO-255 140725	RO-255 140725	RO-255 140725	
<b>9</b>	<b>1.9</b>	<b>Bonnet</b>			BO-2514 140223	BO-2127 140224	BO-2150 140225	
<b>10</b>	<b>0.1</b>	<b>Stem Pin</b>	P-102	P-102	P-102	P-102	P-102	
<b>11</b>	<b>0.3</b>	<b>Washer &amp; Cotter Pin</b>	WC-101	WC-101	WC-101	WC-101	WC-101	

## DIMENSIONAL OUT LINE



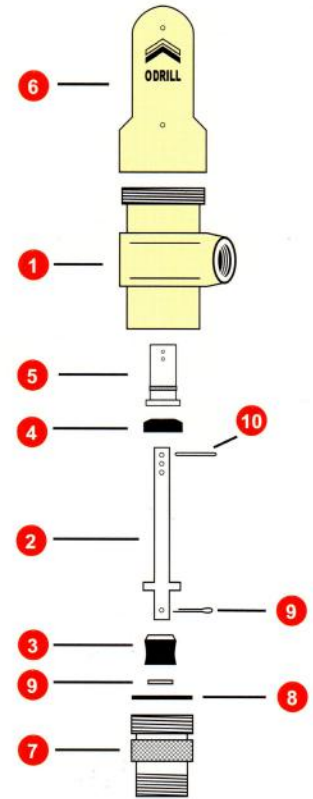
2

# 3" O'DRILL SHEAR RELIEF VALVES

100% Interchangeable with CAMERON® & OTECO®



3" HIGH PRESSURE REPLACEMENT PARTS				
		DESCRIPTION	PRV-30525 500-2750 PSI	PRV-30550 500-5000 PSI
	Approx. Wt. - Lbs.	Shipping Weight →	75 lbs.	75 lbs.
1	41.3	Body	BV-3550 140135	BV-3550 140135
2	1.3	Stem	SS-6106 141232	SS-6110 141235
3	0.4	Piston	SP-6110 141032	SP-4710 141025
4	0.3	Cushion	SC-6110 140335	SC-6110 140335
5	1.5	Bushing	BU-3535 141435	BU-3535 141435
6	17.5	Safety Cover	STC-3505 141135	STC-3505 141135
7	11.3	Liner Sub	LS-353 140432	LS-355 140435
8	0.1	Liner Sub O-Ring	RO-355 140735	RO-355 140735
9	0.3	Washer & Cotter Pin	WC-101	WC-101
10	0.1	Stem Pin	P-102	P-102



3" SHEAR RELIEF VALVE

*We Sell for Less..... !!!*

## ★ PRESSURE SETTING CHART ★

U.S.A. Common Only →	2-Inch (5.08 cm) LOW PRESSURE				2-Inch (5.08 cm) HIGH PRESSURE						3-Inch (7.62 cm) HIGH PRESSURE									
	PRV-20015		PRV-20210		PRV-20513		PRV-21027		PRV-21050		PRV-30525			PRV-30550						
	* PRESSURE SETTINGS AVAILABLE *																			
	ONE NAIL		ONE NAIL		ONE NAIL		ONE NAIL		ONE NAIL		TWO NAILS		ONE NAIL		TWO NAILS		ONE NAIL		TWO NAILS	
psi	kg/cm <sup>2</sup>	psi	kg/cm <sup>2</sup>	psi	kg/cm <sup>2</sup>	psi	kg/cm <sup>2</sup>	psi	kg/cm <sup>2</sup>	psi	kg/cm <sup>2</sup>	psi	kg/cm <sup>2</sup>	psi	kg/cm <sup>2</sup>	psi	kg/cm <sup>2</sup>	psi	kg/cm <sup>2</sup>	
3 Penny	125	8.79	250	17.58																
4 Penny	200	14.06	400	28.12																
6 Penny	250	17.58	500	35.15																
8 Penny	300	21.09	600	42.18																
12 Penny	425	29.88	850	59.76																
16 Penny	500	35.15	1000	70.30	500	35.15	1000	70.30	1000	70.30			500	35.15			1000	35.15	2000	70.30
20 Penny					625	43.94	1250	87.88	1250	87.88			625	43.94			1250	59.76	2500	119.51
30 Penny					750	52.73	1500	105.45	1500	105.45	3000	210.90	725	50.97	1450	101.94	1500	87.88	3000	175.75
40 Penny					875	61.51	1750	123.03	1750	123.03	3500	246.05	800	56.24	1600	112.48	1750	105.45	3500	210.90
50 Penny					1125	79.09	2250	158.18	2250	158.18	4500	316.35	1000	70.30	2000	140.60	2250	158.18	4500	316.35
60 Penny					1375	96.66	2750	175.75	2500	175.75	5000	351.50	1250	87.88	2500	175.75	2500	175.75	5000	351.50

OTECO and CAMERON are trade marks of other companies. O'Drill, Inc., is in no way affiliated with these companies. The part numbers listed above are for identification purpose only.

\* Shear pressures may vary ± 5% due to lack of absolute uniformity in manufactured nails.

*Give us a call...*

★ TEL: (713) 541-2020 • FAX (713) 541-9090 • 1-800-255-6263 ★



# O'DRILL • MCM



## PART NUMBER "Cross Over Chart" (CAMERON® & OTECO®)

Description	Oteco® Part No.	Descriptive No.	Cameron® Part No.	Fits OTECO® Valve No.
Body	140121	BV-2110	2139	PRV-20015 2" L.P.
Stem	141221	SS-4022	2141	
Piston	141025	SP-4710	2161	
Cushion Ring	140322	SC-4022	2142	
Bushing	141421	BU-2150	2832	
Bushing	141422	BU-2210	2140	
Safety Cover	141125	STC-2125	16397	
Body	140125	BV2550	2160	PRV-20513
Stem	141224	SS-4104	2162	
Stem	141225	SS-4030	19194	PRV-21027
Piston	141025	SP-4710	2161	
Cushion Ring	140325	SC-4110	2138	PRV-21050
Bonnet	140223	BO-2514	3320	
Bonnet	140225	BO-2150	19195	2" L.P.
Liner Sub	140425	LS-255	2131-1	
L.S. O-Ring	140725	RO-255	6227-30-13-90	
Safety Cover	141125	STC-2125	16397	
Body	140126	BV-2610	19149	PRV-26010 (Complete Valve Not available)
Stem	141226	SS-4122	19153	
Cushion Ring	140326	SC-4120	19151	
Liner	140226	BO-2610	19155	
Liner Sub	140426	LS-2610	19154	
L.S. O-Ring	140726	RO-2610	6227-36-13-90	
Retainer Ring	141726	RR-2610	19152	
R.R. -O-Ring	141826	RRO-261	6227-36-13-90	
Safety Cover	141126	STC-2610	19150	
Body	140135	BV-3550	18663	PRV-30525
Stem	141232	SS-6106	2297	
Stem	141235	SS-6110	3454	PRV-30550
Piston	141032	SP-6110	2299	
Piston	141025	SP-4710	2161	3" L.P.
Cushion Ring	140335	SC-6110	2300	
Bushing	141435	BU-3535	2298	
Liner Sub	140432	LS-353	2296	
Liner Sub	140435	LS-355	3455	
L.S. O-Ring	140735	RO-355	6227-42-1-70	
Safety Cover	141135	STC-3505	17230	

*If You want to economize.....O'Drillize !!!*

★ CORPORATE OFFICE ★



**O'Drill/MCM, Inc.**

5055 Cranswick Rd. • Houston, Texas 77041

Website: [www.odrillmcm.com](http://www.odrillmcm.com)

Office: (713) 541.2020 / Fax: (713) 541.9090 / 1.800.255.6263

email: [sales@odrillmcm.com](mailto:sales@odrillmcm.com)

